

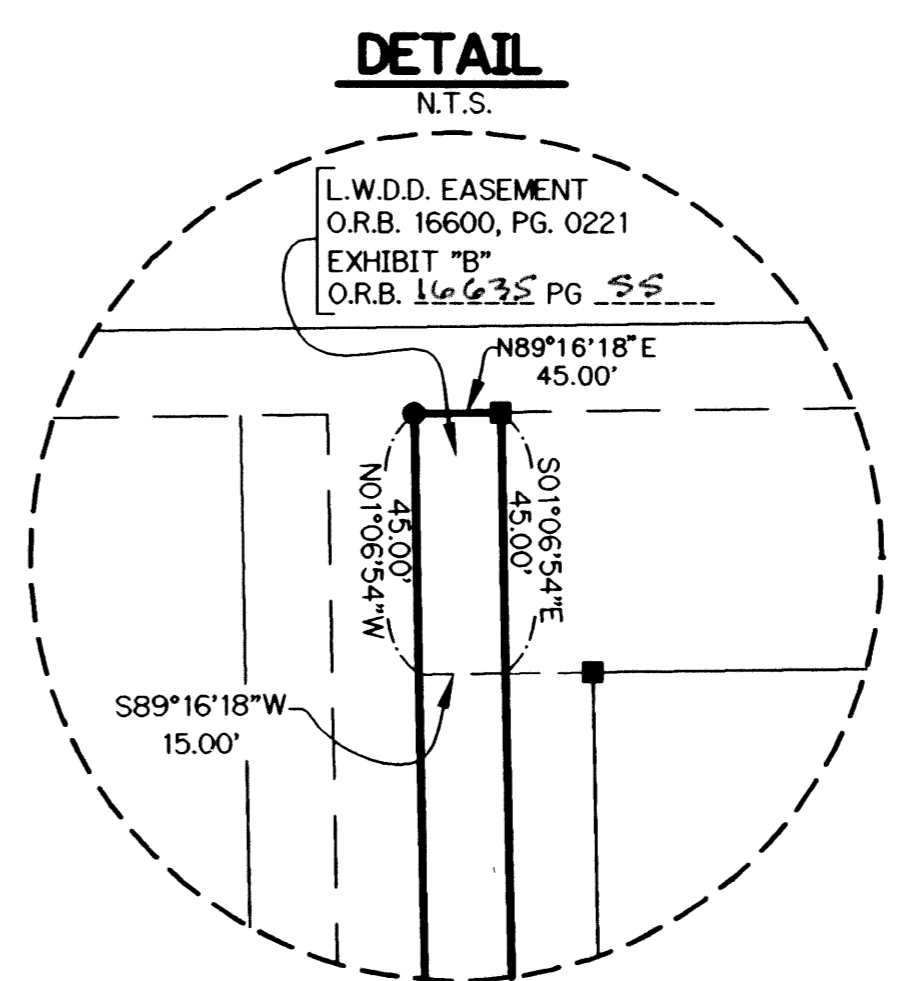
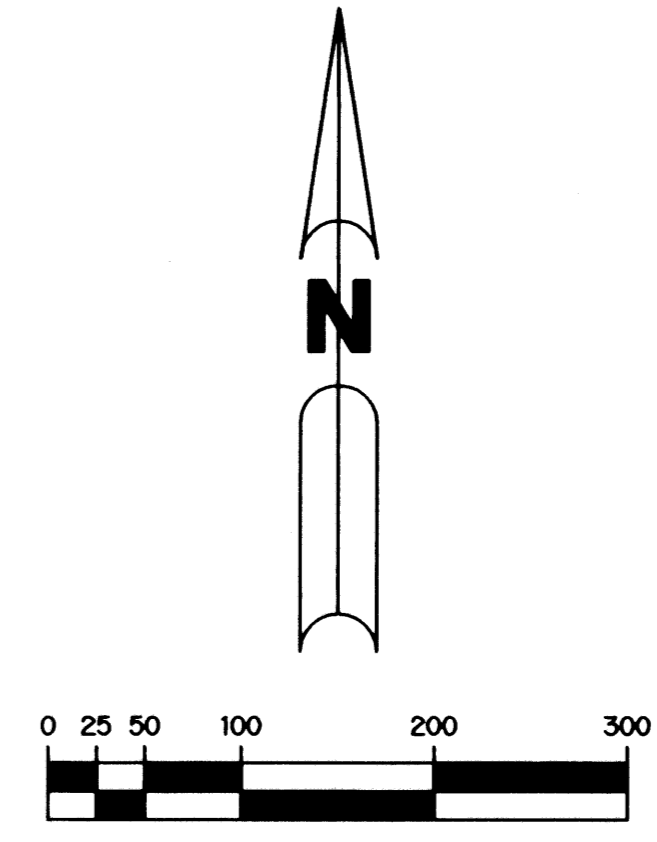
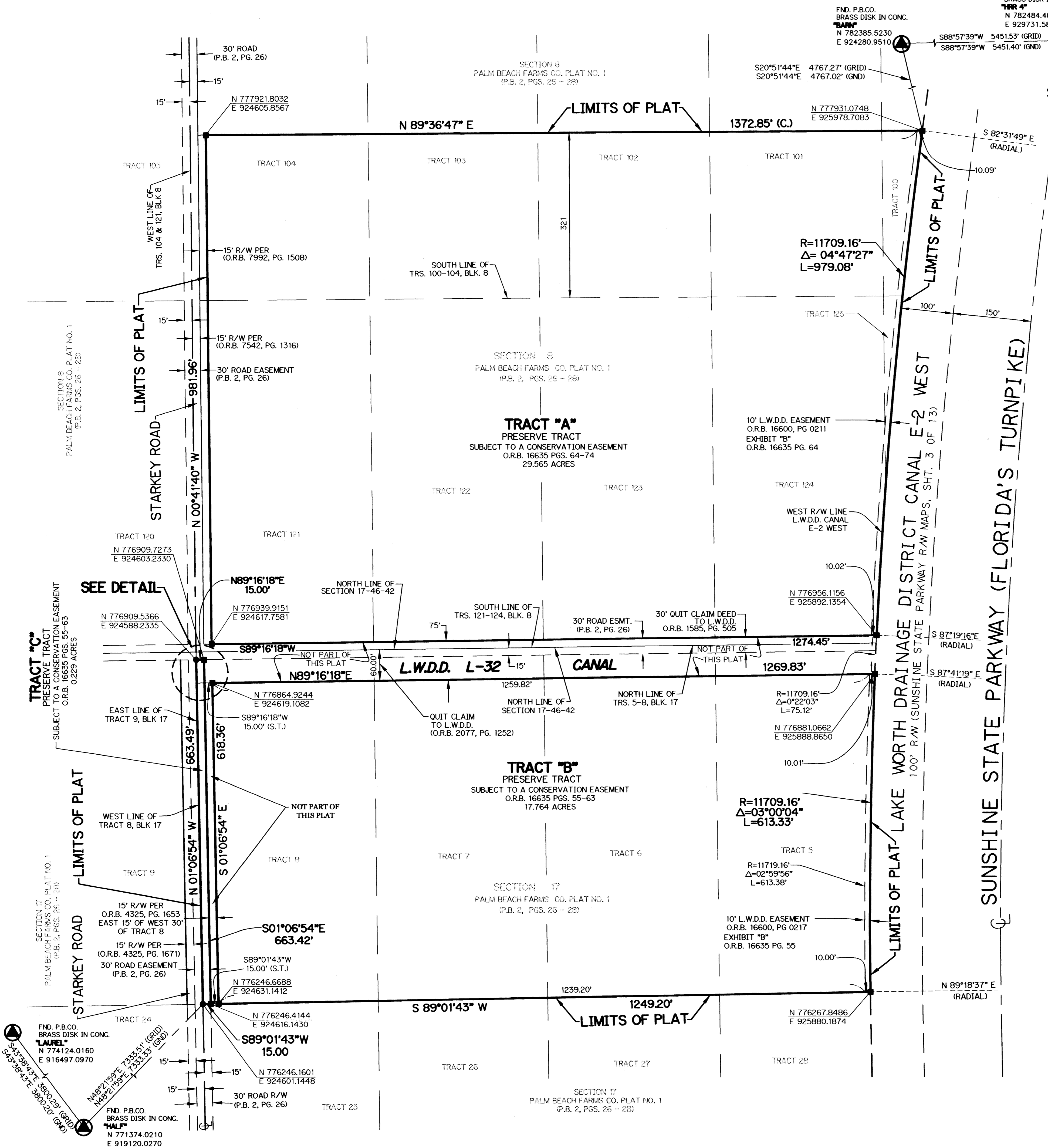
CANYON LAKES PRESERVE AREA NO. 2

BEING A REPLAT OF A PORTION OF TRACTS 5 THROUGH 8, SECTION 17, AND TRACTS 100 THROUGH 104, 121 THROUGH 125, SECTION 8, PALM BEACH FARMS COMPANY PLAT NO. 1, ACCORDING TO THE PLAT THEREOF, AS RECORDED IN PLAT BOOK 2, PAGES 26 THROUGH 28, OF THE PUBLIC RECORDS, ALL LYING WITHIN SECTIONS 8 AND 17, TOWNSHIP 46 SOUTH, RANGE 42 EAST PALM BEACH COUNTY, FLORIDA

SHEET 2 OF 2

FEBRUARY, 2004

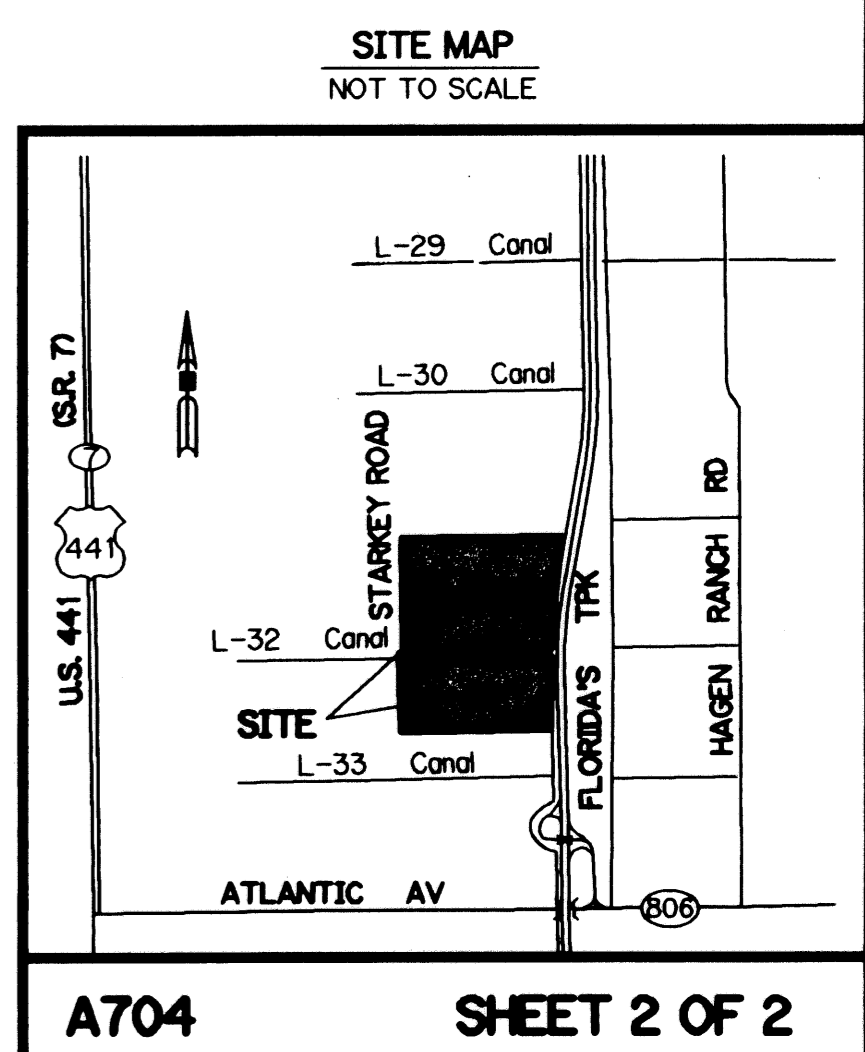
165



THIS INSTRUMENT PREPARED BY
 PERRY C. WHITE, P.S.M. 4213, STATE OF FLORIDA
 LAWSON, NOBLE AND WEBB, INC.
 ENGINEERS PLANNERS SURVEYORS
 420 COLUMBIA DRIVE
 WEST PALM BEACH, FLORIDA 33409
 LB-6674

NOTE:
 * COORDINATES SHOWN ON THE GEODETIC CONTROL MEET OR EXCEED THE LOCAL ACCURACY REQUIREMENTS OF A 2 CENTIMETER GEODETIC CONTROL SURVEY.
 COORDINATES SHOWN ARE GRID COORDINATES
 DATUM = NAD 83 (1980 ADJUSTMENT)
 ZONE = FLORIDA EAST ZONE
 LINEAR UNIT = U.S. SURVEY FEET
 COORDINATE SYSTEM = 1983 STATE PLANE TRANSVERSE MERCATOR PROJECTION
 P.O.B. = POINT OF BEGINNING
 P.O.C. = POINT OF COMMENCEMENT
 SCALE FACTOR = 1.0000242
 NO ROTATION = (GRID BEARING TO PLAT BEARING)

- LEGEND:**
- - FIND PERMANENT REFERENCE MONUMENT, L.B. #6674
 - - SET PERMANENT REFERENCE MONUMENT, L.B. #6674
 - - PERMANENT REFERENCE MONUMENT PARKER KALON NAIL AND DISC, L.B. #6674
 - △ - DELTA ANGLE
 - AC. - ACRES
 - B.E. - BUFFER EASEMENT
 - CB - CHORD BEARING
 - CH - CHORD
 - C - CENTERLINE
 - D.B. - DEED BOOK
 - D.E. - DRAINAGE EASEMENT
 - L - ARC LENGTH
 - L.A.E. - LIMITED ACCESS EASEMENT
 - L.M.A.E. - LAKE MAINTENANCE ACCESS EASEMENT
 - L.M.E. - LAKE MAINTENANCE EASEMENT
 - L.M.E. - LAKE MAINTENANCE EASEMENT
 - L.S.E. - LIFT STATION EASEMENT
 - NR. - NOT RADIAL
 - N.T.S. - NOT TO SCALE
 - O.R.B. - OFFICIAL RECORD BOOK
 - P.B. - PLAT BOOK
 - P.B.C.U.E. - PALM BEACH COUNTY UTILITY EASEMENT
 - P.C. - POINT OF CURVATURE
 - P.I. - POINT OF INTERSECTION
 - PGS. - PAGES
 - P.S.M. - PROFESSIONAL SURVEYOR AND MAPPER
 - R - RADIUS
 - RAD. - RADIAL
 - R/W - RIGHT-OF-WAY
 - S.F. - SQUARE FEET
 - S.T. - SURVEY TIE
 - U.E. - UTILITY EASEMENT
 - P.O.B. - POINT OF BEGINNING
 - P.O.C. - POINT OF COMMENCEMENT
 - N 737648.0171
E 905258.2326 - DENOTES STATE PLANE COORDINATES



SUBDIVISION CANYON LAKES PRESERVE AREA NO. 2
 BOOK 101 PAGE 105
 FLOOD ZONE B FLOOD MAP # 2004
 QUAD # 051 ZONING ABR
 SE
 TAZ 159
 PUD NAME: FOGG NORTH